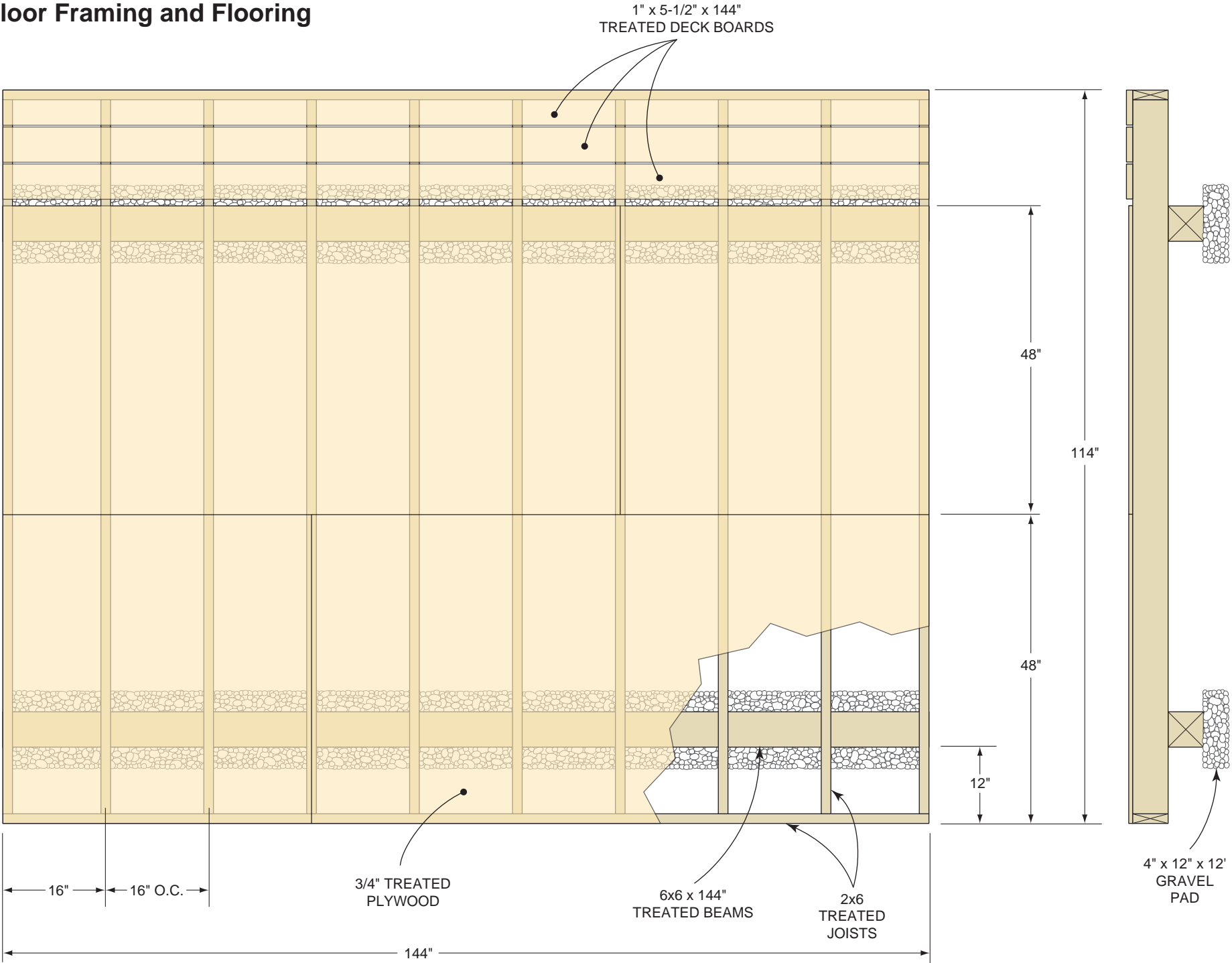
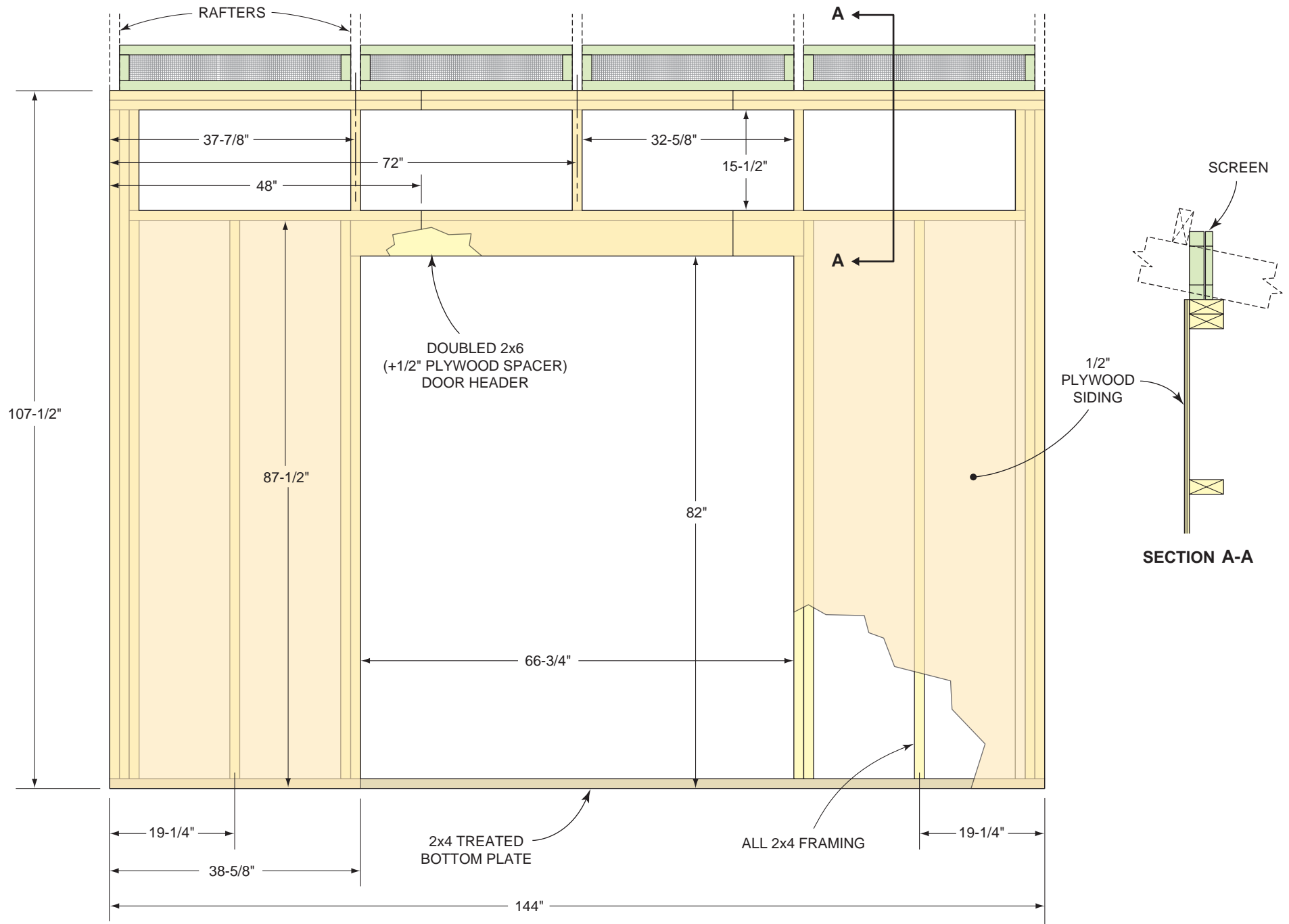


**Figure B**  
**Floor Framing and Flooring**



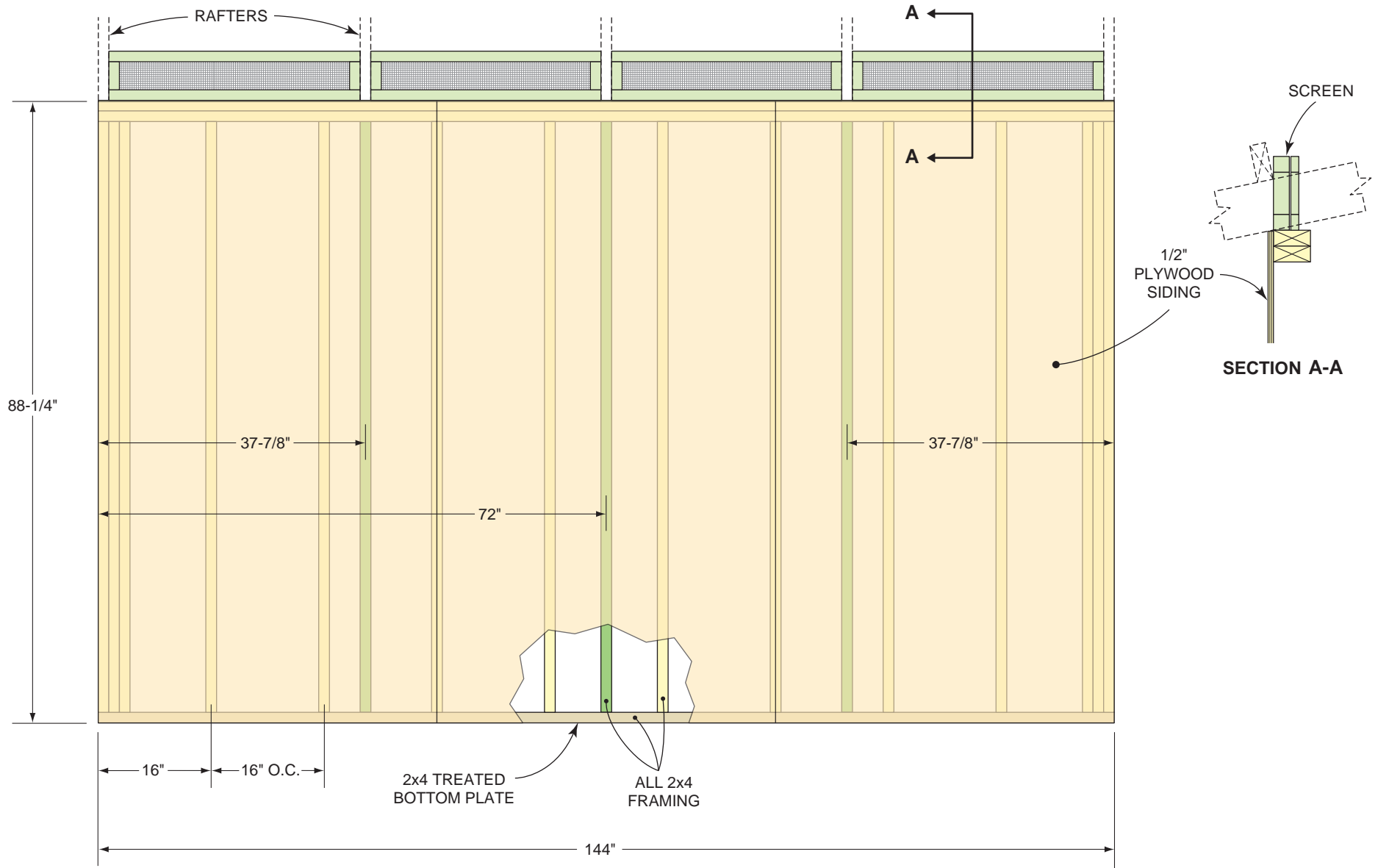
# Figure C Front Wall Framing and Siding

SCREENS ARE SHOWN HERE FOR POSITIONING ONLY.  
INSTALL AFTER RAFTERS AND PURLINS ARE  
ATTACHED TO WALL FRAMING.

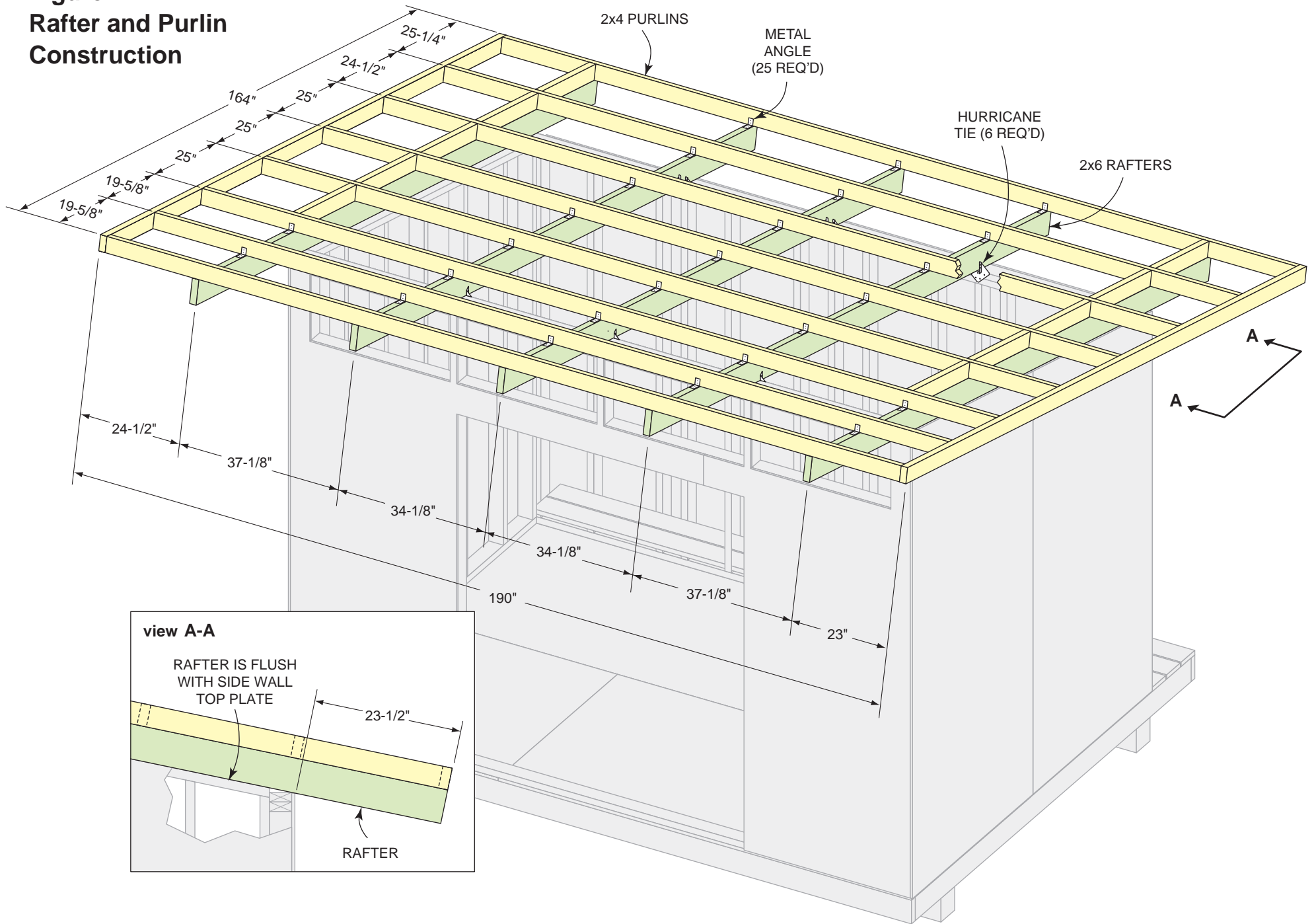


# Figure D Rear Wall Framing and Siding

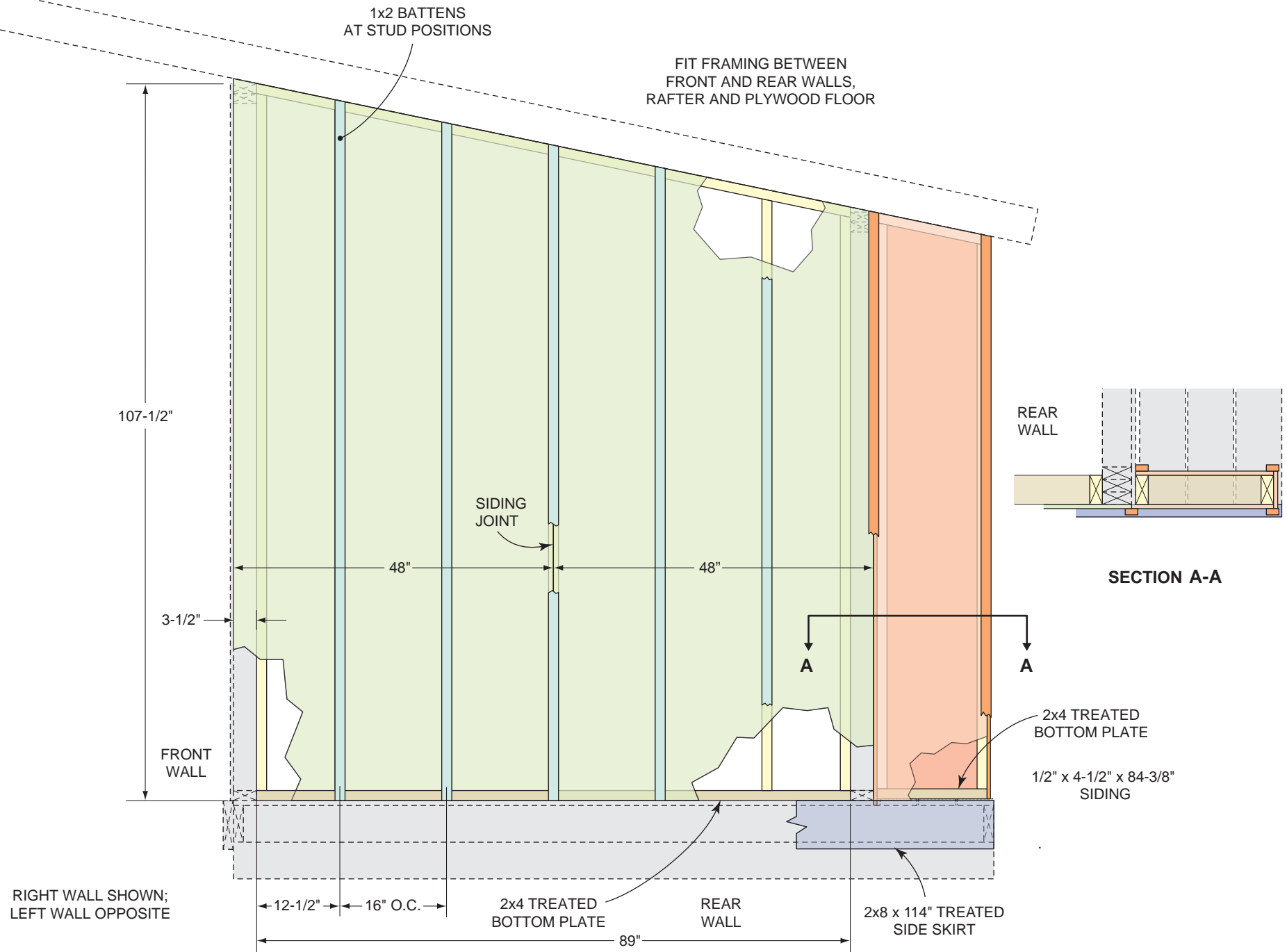
SCREENS ARE SHOWN HERE FOR POSITIONING ONLY.  
INSTALL AFTER RAFTERS AND PURLINS ARE  
ATTACHED TO WALL FRAMING.



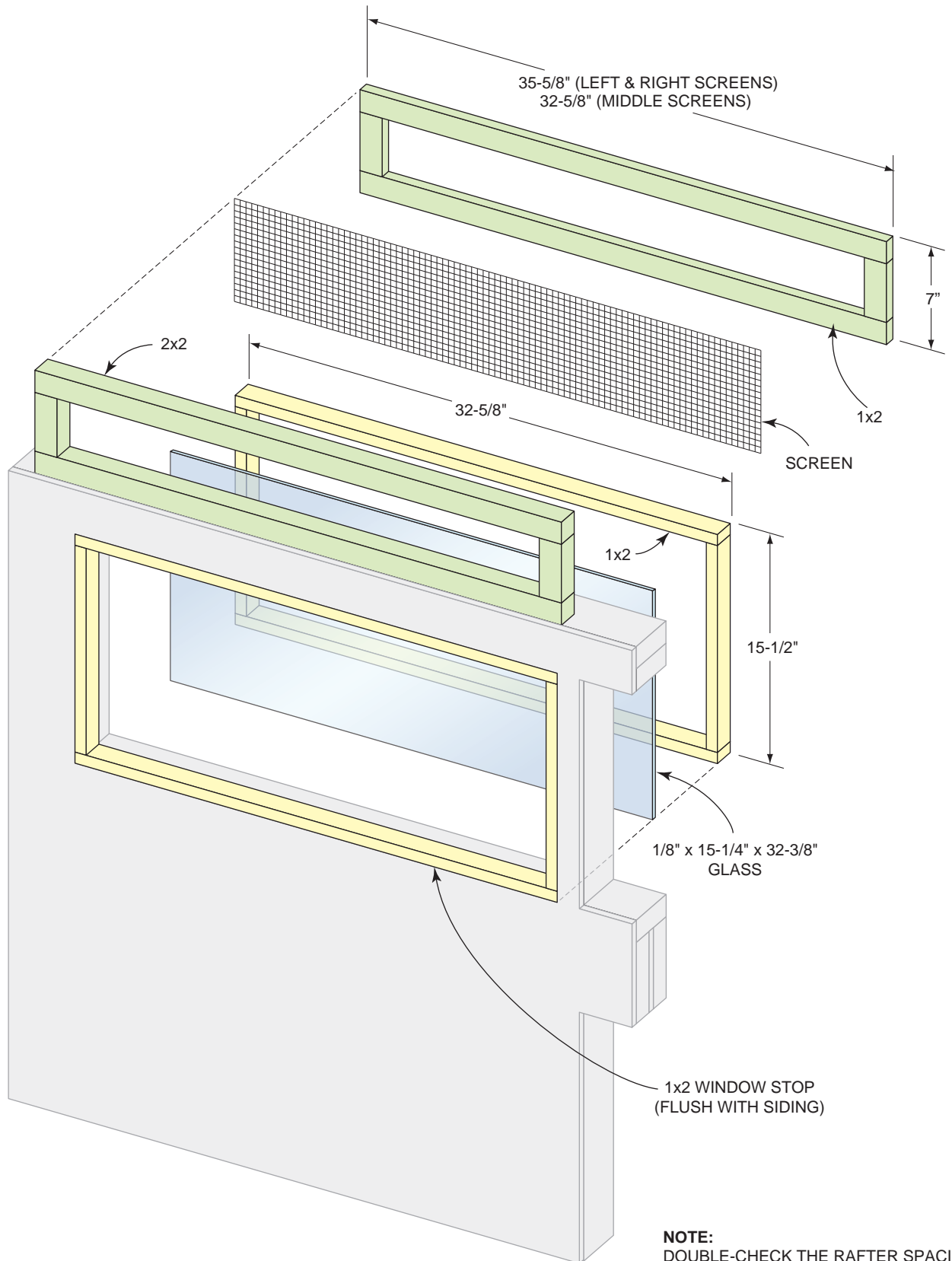
**Figure E**  
**Rafter and Purlin**  
**Construction**



**Figure F**  
**Side-Wall Framing and Siding**

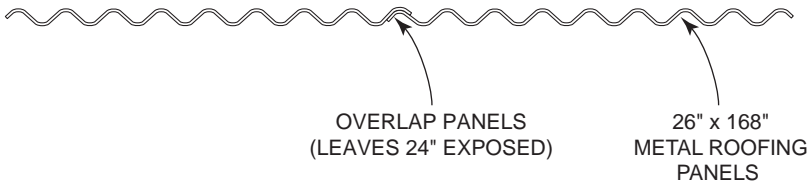
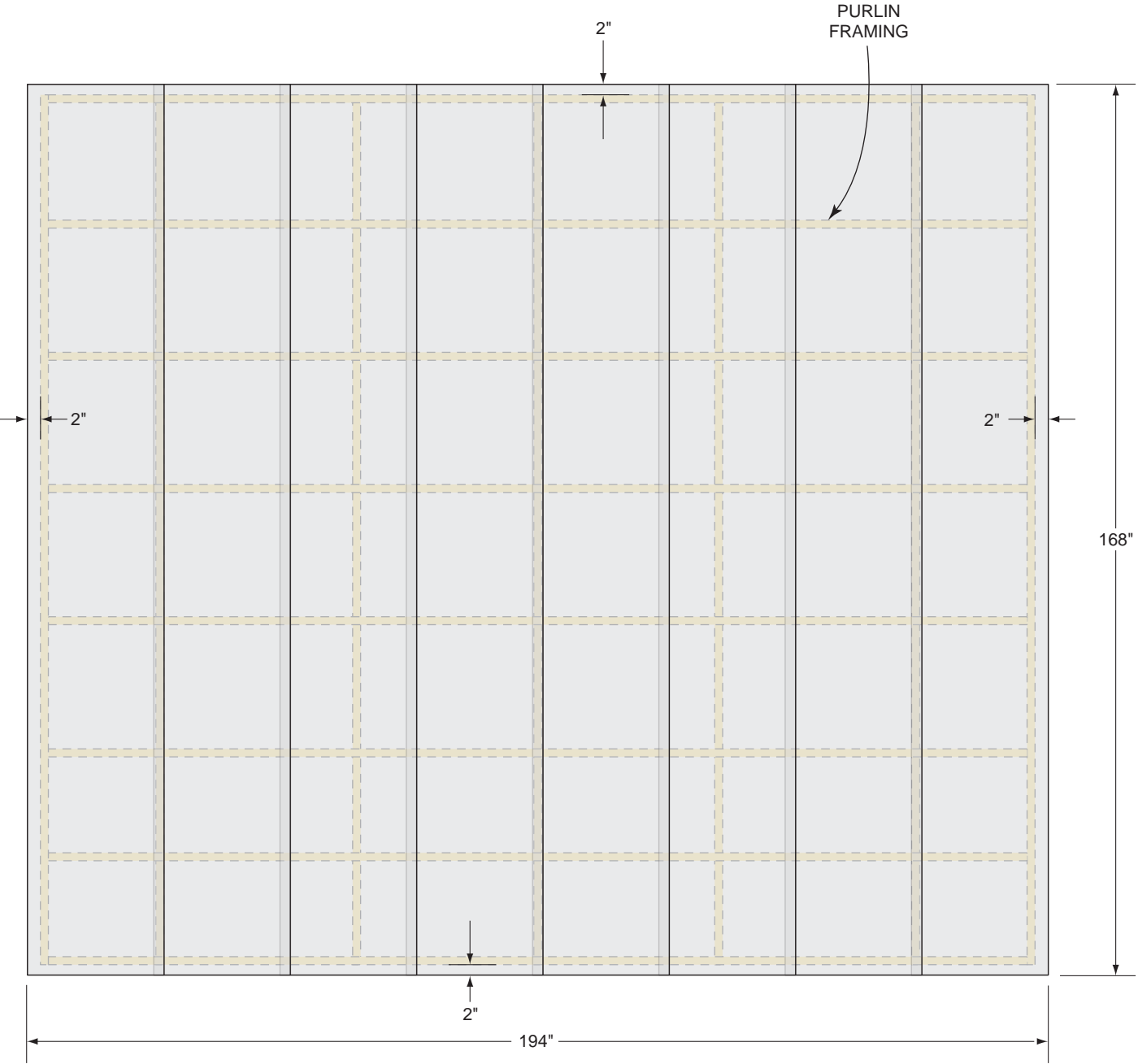


**Figure G**  
**Window and Screen**  
**Construction**

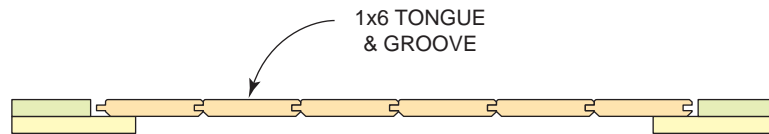
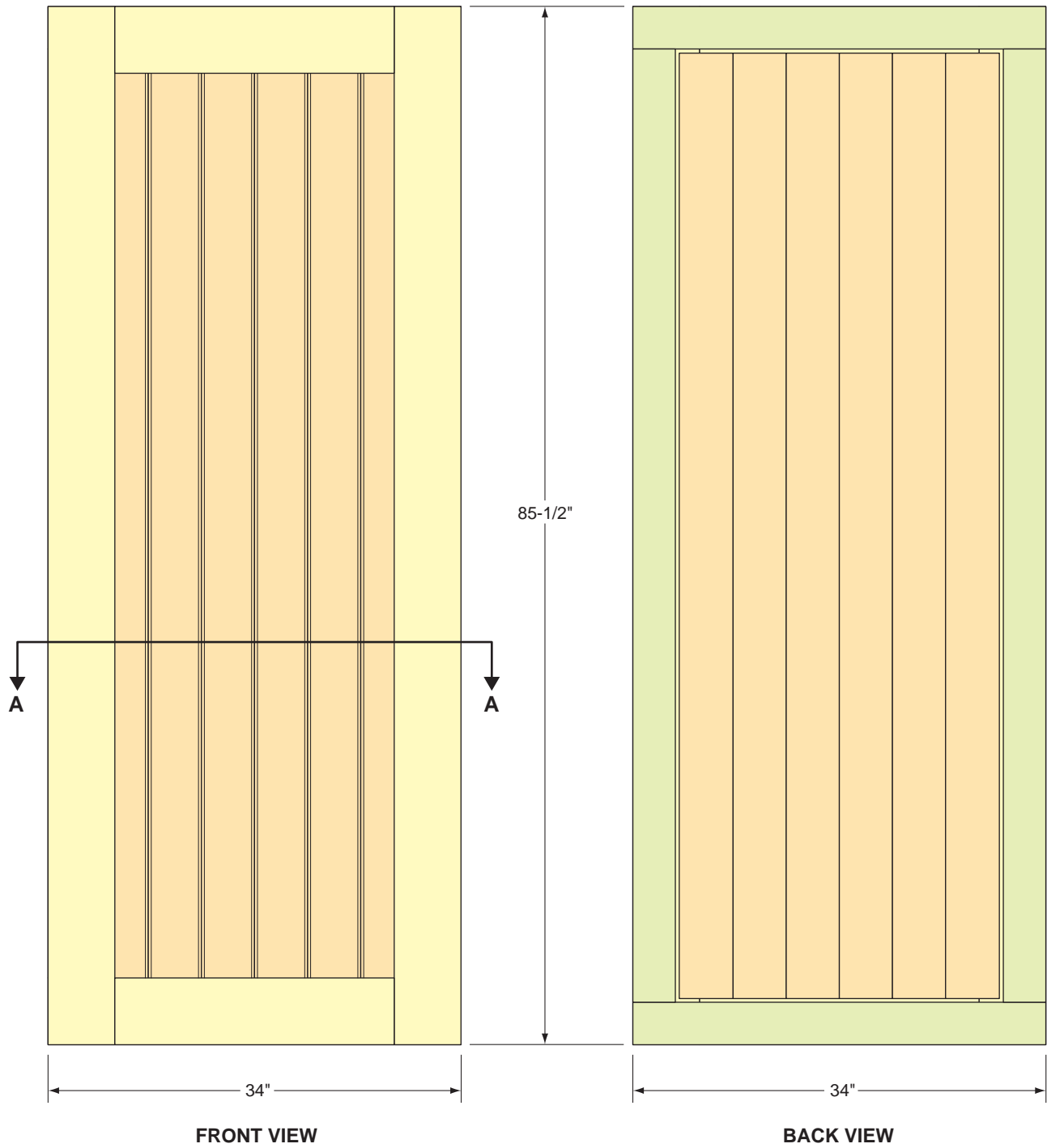


**NOTE:**  
 DOUBLE-CHECK THE RAFTER SPACINGS  
 AND THE ACTUAL WINDOW OPENINGS  
 BEFORE CUTTING PIECES FOR THE  
 SCREENS AND WINDOW ASSEMBLIES.

**Figure H**  
**Metal Roof**  
**Installation**

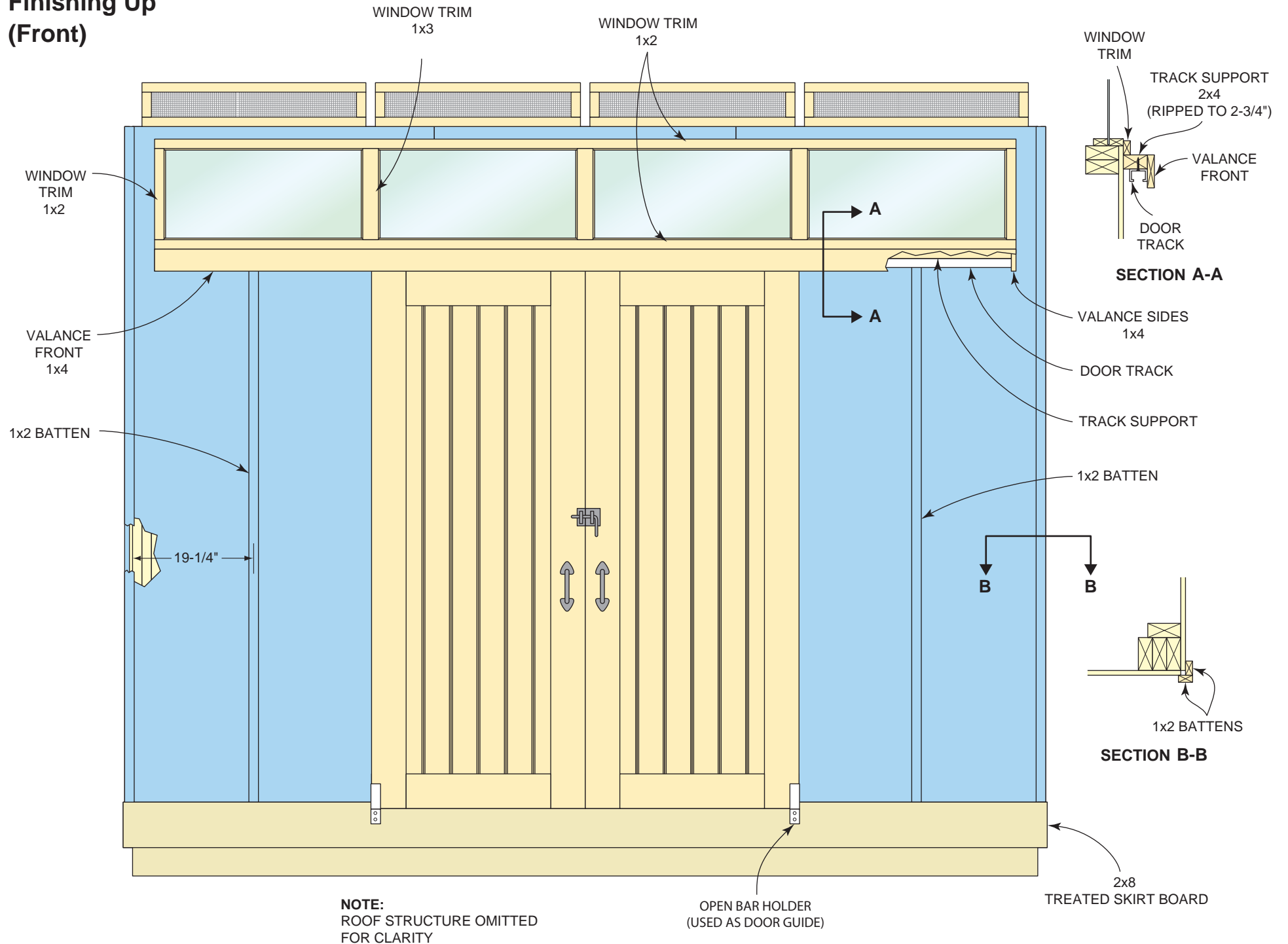


**Figure J**  
**Door Construction**

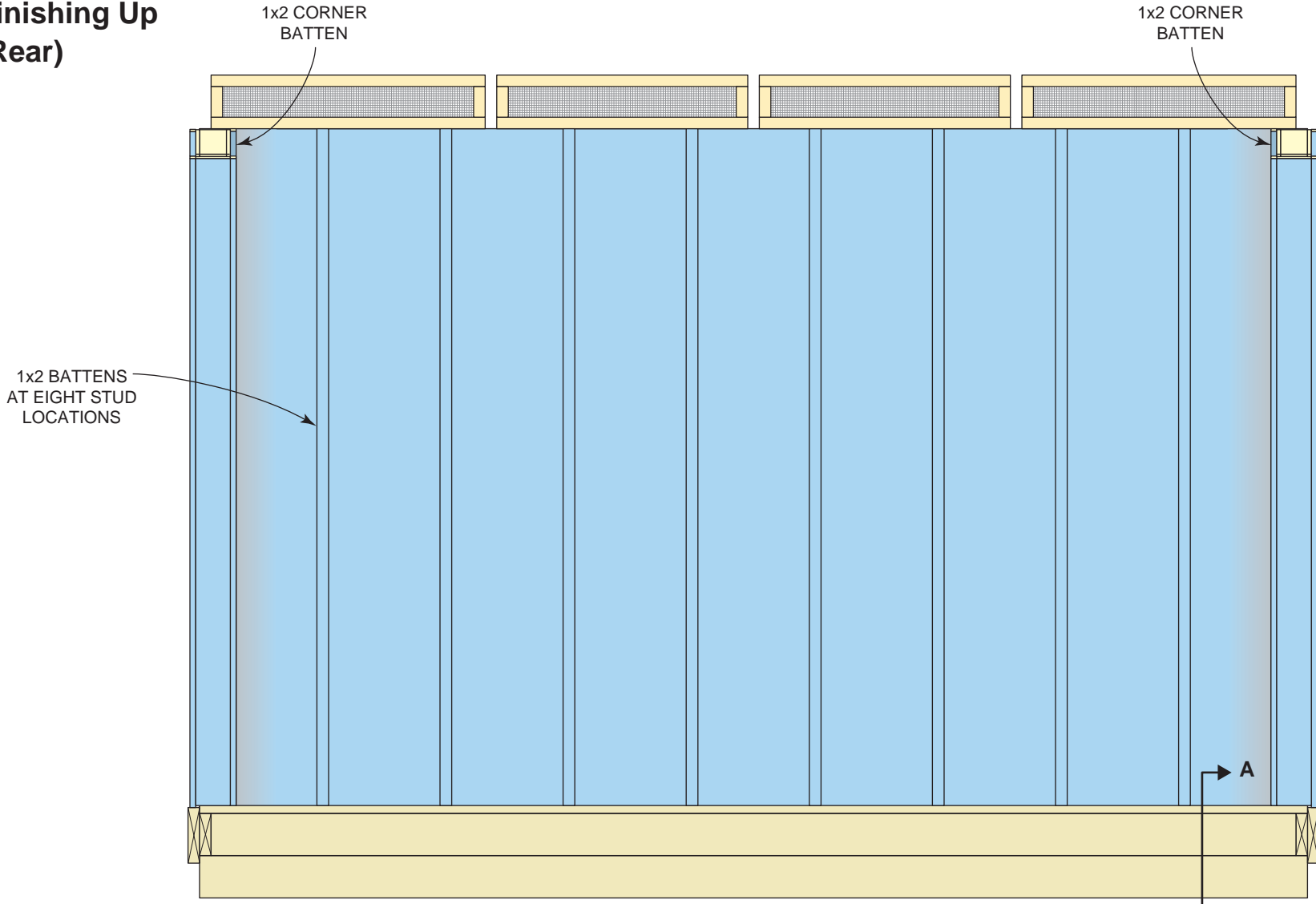


**NOTE:**  
ALL YELLOW PIECES ARE 1x6; ALL GREEN PIECES ARE 1x4. THE FRAME PIECES ARE POCKET-SCREWED TO FORM FRONT AND REAR FRAMES, WHICH ARE GLUED AS SHOWN. THE POCKET SCREWS ARE ON THE GLUED SIDES.

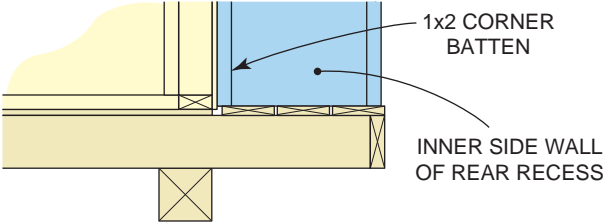
**Figure K**  
**Finishing Up**  
**(Front)**



**Figure L**  
**Finishing Up**  
**(Rear)**



**REAR VIEW**



**PARTIAL SECTION A-A**

**NOTE:**  
ROOF STRUCTURE OMITTED  
FOR CLARITY.